

**MAX**

ENGINEERED FOR  
PERFORMANCE



**RE·BAR·TIER**  
**TWINTIER**

Original since 1993, made in Japan

# COMPANY & BRAND

## WHO IS MAX

Since 1942, MAX has been recognized worldwide as a leading manufacturer of high-end industrial tools and office products. MAX product engineers concentrate on developing products with highly innovative and durable features to support the ever-evolving needs of the professionals that use them. The MAX Advantage begins with our R&D, engineering and production teams and ends with our customers. Based on end-user feedback, we continually re-engineer our products to meet real-world demands. Our close working relationships with our customers allow us to stay ahead of industry trends in growing markets.



### Corporate Slogan

**ENGINEERED FOR PERFORMANCE**

Working to create new standards, we have developed a deep familiarity with the people who use our products. This encourages us to think boldly, as we aim to bring the world a unique style of convenience.

World's first Battery Operated  
Cordless Rebar Tying Tool

**RE-BAR-TIER**

In 1993 MAX developed the world's first battery operated rebar tying tool "RE-BAR-TIER" for the Japanese market and launched in 1995 for European market.

The most advanced Battery Operated  
Cordless Rebar Tying Tool

**TVINTIER**

In 2017 MAX launched the 7th generation rebar tying tool, the RB441T TWINTIER. This was the first TWINTIER to enter the market.

## OVER 30 YEARS EXPERIENCE

**RE-BAR-TIER**  
**RB260 - 1993**  
The World's first battery operated  
Rebar Tying Machine in Japan

**RE-BAR-TIER**  
**RB392 - 1998**  
Increased tying speed up to  
1 sec/tie

**RE-BAR-TIER**  
**RB655 - 2006**  
Mounted DC brushless  
twisting motor

**RE-BAR-TIER**  
**RB398 - 2015**  
20th Anniversary of  
RE-BAR-TIER

**TVINTIER**  
**RB611T - 2019**  
Large Jaw model

**TVINTIER**  
**RB401T-E - 2020**  
Stand-Up model



## BENEFIT



Faster



Easy Operation



Increase productivity



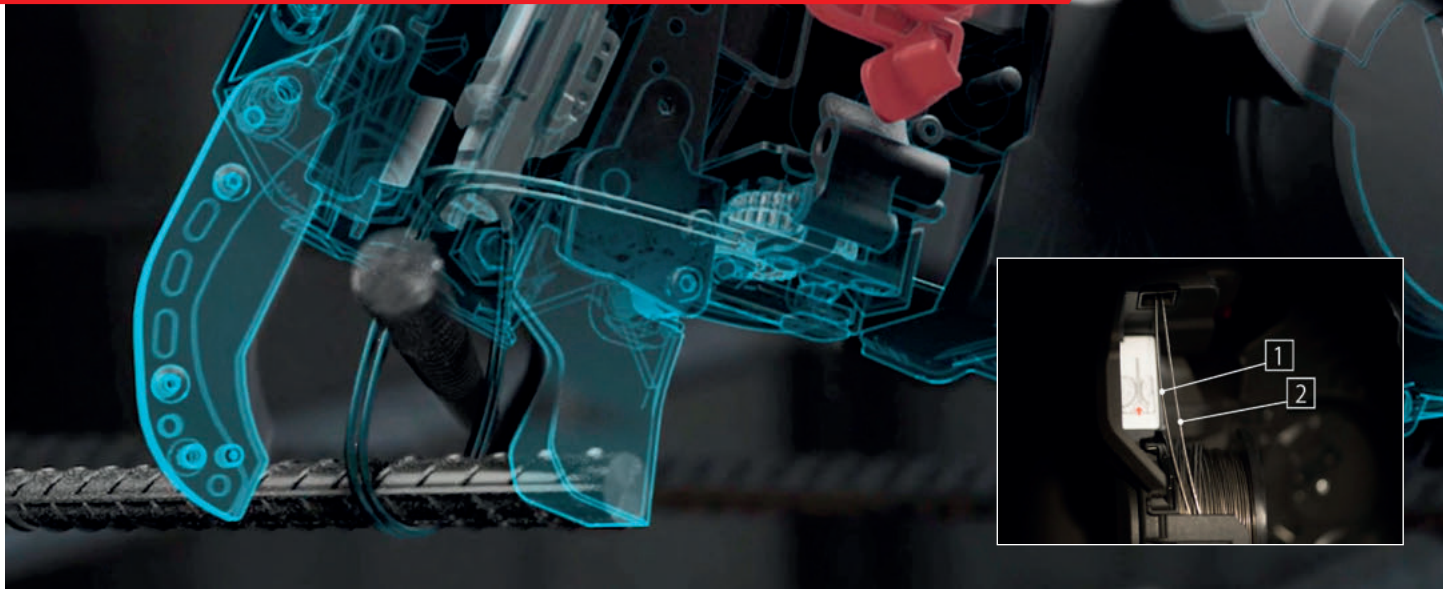
Reduce health risk



No Experience Required



# TWINTIER MECHANISM



## KEY FEATURES

### FASTER TIE SPEED

**TWINTIER**

Incorporates MAX Twin-Wire System which wraps two wires simultaneously, making a single tie in 0.5 to 0.7 seconds. Single-Wire System wraps one wire three times, making each tie at 0.9 seconds.



**TWIN WIRE SYSTEM**



**SINGLE WIRE SYSTEM**



### +100% MORE TIE CAPACITY - COIL



**TWIN WIRE SYSTEM**

Approx. **240 ties**

TW1061 Wire



**SINGLE WIRE SYSTEM**

Approx. **120 ties**

TW898 Wire



TWINTIER can make approx. 240 ties per one coil of wire. REBARTIER can make approx. 120 ties per one coil of wire.

### +1000 TIES MORE CAPACITY - CHARGE

D13 x D13 Rebar combination



**TWIN WIRE SYSTEM**

Approx. **5.000 ties**



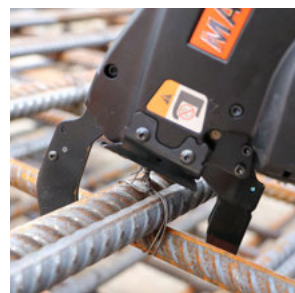
**SINGLE WIRE SYSTEM**

Approx. **4.000 ties**



Both TWINTIER and REBARTIER use the same battery, but TWINTIER can tie 5000 times on a full charge, while REBARTIER can tie 4000 times (1000 less ties).

### +50% TIGHTNESS



Tying Strength (N)

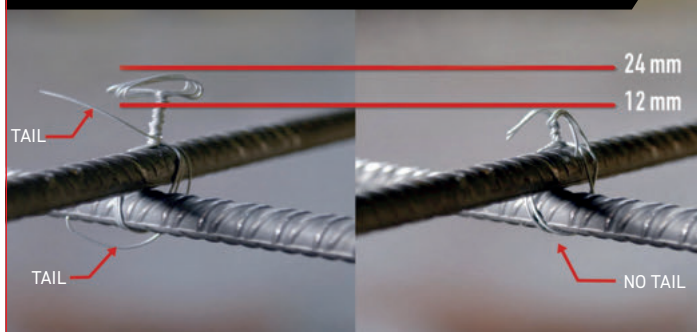


**TWIN WIRE SYSTEM**



**SINGLE WIRE SYSTEM**

### SHORTER TIE HEIGHT BY 50%



### NUMBER OF TIE/COIL

	RB398S	RB443T	RB611T	RB401T-E
D10+D10	120	265	-	260
D13+D13	120	240	-	235
D16+D16	120	215	205	210
D20+D20	-	180	180	175
D22+D22	-	170	170	-
D25+D25	-	-	155	-
D38+D16	-	-	150	-
D38+D16+D16	-	-	140	-

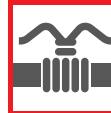
## RB443T - FASTER TYING MODEL -



### FEATURES



Wire Feeding Support



0.5sec/tie



Easy Wire Loading Button



Short Trigger Stroke



Torque Dial



Maximum 265 ties/coil



Durable



Equipped Belt Hook

### KEY FEATURE. 1

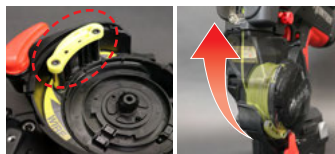
#### Faster Tying Speed



**0.5 sec/tie**

#### MECHANISM

Improved tying operation and increased wire feed speed with new "WIRE FEED SUPPORT" part, which allows even faster tying than the previous RB441T.



### KEY FEATURE. 2

#### Two Ways Loading Wire



#### 1. WIRE LOADING ASSISTANCE

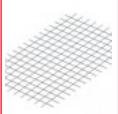


#### 2. MANUAL WIRE LOADING

The WIRE LOADING ASSISTANCE feature added to the RB443T makes wire replacement easier. You can also still use the same manual replacement method as the previous RB441T.

### APPLICABLE REBAR COMBINATION

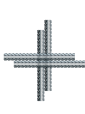
#### Mesh Rebar



MINIMUM  $\Phi 2.6 \times \Phi 2.6$

MAXIMUM  $\Phi 8 \times \Phi 8$

4 Bars



MINIMUM  $D10 \times D10 \times D10 \times D10$

MAXIMUM  $D16 \times D16 \times D13 \times D13$

2 Bars



MINIMUM  $D10 \times D10$

MAXIMUM  $D22 \times D22$



Extension Bar Optional



Lift-up Nose Optional

### SPECIFICATIONS

MODEL:	RB443T
WEIGHT:	2.5 Kg Battery included
DIMENSIONS:	H295 × W120 × L330 mm
TYING SPEED:	0.5 sec/tie
WRAPS PER TIE:	2 wraps
TIES PER COIL:	Approx. 170 to 265 ties
TIES PER CHARGE:	Approx. 5,000 ties
BATTERY:	JPL91450A 5.0 Ah Li-ion 14.4 V
CHARGER:	JC925A
BATTERY RECHARGE TIME:	80% capacity - 60min 100% capacity - 80min
APPLICABLE REBAR COMBINATION:	Mesh rebars: $\Phi 2.6 \times \Phi 2.6 - \Phi 8 \times \Phi 8$ 2 rebars: $D10 \times D10 - D22 \times D22$



## RB611T - LARGE JAW MODEL-



Applicable Rebar Combination



MINIMUM  
D10×D10×D10×D10  
MAXIMUM  
D19×D19×D19×D19



MINIMUM  
D16×D16  
MAXIMUM  
D29×D32



Extension Bar Optional

Enables tying larger rebar and conduit



### SPECIFICATIONS

MODEL:	RB611T
WEIGHT:	2.5 Kg Battery included
DIMENSIONS:	H300 × W120 × L350 mm
TYING SPEED:	0.7 sec/tie
WRAPS PER TIE:	2 wraps
TIES PER COIL:	Approx. 140 to 205 ties
TIES PER CHARGE:	Approx. 5,000 ties
BATTERY:	JPL91450A 5.0 Ah Li-ion 14.4 V
CHARGER:	JC925A
BATTERY RECHARGE TIME:	80% capacity - 60min 100% capacity - 80min
APPLICABLE REBAR COMBINATION:	2 rebars: D16×D16 - D29×D32 4 rebars: D19×D19×D19×D19

## RB401T-E - STAND-UP MODEL-



Applicable Rebar Combination



MAXIMUM  
D13×D13×D13×D13



MINIMUM  
D10×D10  
MAXIMUM  
D20×D20



Short Nose Attachment Optional

Tying without bending down reduce strain on the lower back.



### SPECIFICATIONS

MODEL:	RB401T-E
WEIGHT:	4.6 Kg Battery included
DIMENSIONS:	H322 × W408 × L1,100 mm
TYING SPEED:	0.7 sec/tie
WRAPS PER TIE:	2 wraps
TIES PER COIL:	Approx. 180 to 260 ties
TIES PER CHARGE:	Approx. 4,600 ties
BATTERY:	JPL91450A 5.0 Ah Li-ion 14.4 V
CHARGER:	JC925A
BATTERY RECHARGE TIME:	80% capacity - 60min 100% capacity - 80min
APPLICABLE REBAR COMBINATION:	2 rebars: D10×D10 - D20×D20 4 rebars: D13×D13×D13×D13

## TW1061T SERIES TWIN WIRE



# Tiewire for TVINTIER

Patented. Australia No. 2016294893, New Zealand No. 738528



30 coils /box



**TW1061T**  
Regular Steel



**TW1061-EG**  
Electro Galvanize



**TW1061-PC**  
Polyester-Coated

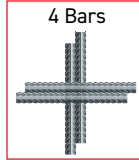


**TW1061-S**  
Stainless Steel

## RB398S - SINGLE WIRE REGULAR MODEL -

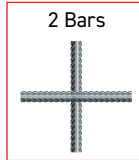


### Applicable Rebar Combination



4 Bars

MINIMUM  
D10×D10×D10×D10  
MAXIMUM  
D13×D13×D13×D13



2 Bars

MINIMUM  
D10×D10  
MAXIMUM  
D16×D19

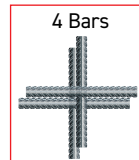
### SPECIFICATIONS

MODEL:	RB398S
WEIGHT:	2.4 Kg Battery included
DIMENSIONS:	H305 × W105 × L290 mm
TYING SPEED:	0.9 sec/tie
WRAPS PER TIE:	3 wraps
TIES PER COIL:	Approx. 120 ties
TIES PER CHARGE:	Approx. 4,000 ties
BATTERY:	JPL91450A 5.0 Ah Li-ion 14.4 V
CHARGER:	JC925A
BATTERY RECHARGE TIME:	80% capacity - 60min 100% capacity - 80min
APPLICABLE REBAR COMBINATION:	2 rebars: D10×D10 - D16×D19 4 rebars: D13×D13×D13×D13

## RB518 - SINGLE WIRE LARGE JAW MODEL -

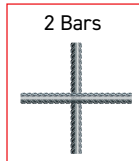


### Applicable Rebar Combination



4 Bars

MINIMUM  
D10×D10×D10×D10  
MAXIMUM  
D13×D13×D16×D16



2 Bars

MINIMUM  
D16×D16  
MAXIMUM  
D22×D25

### SPECIFICATIONS

MODEL:	RB518
WEIGHT:	2.4 Kg Battery included
DIMENSIONS:	H305 × W105 × L305 mm
TYING SPEED:	Approx. 1.0 sec/tie
WRAPS PER TIE:	3 or 4 wraps
TIES PER COIL:	3 wraps: Approx. 90 ties 4 wraps: Approx. 75 ties
TIES PER CHARGE:	3 wraps: Approx. 3,200 ties 4 wraps: Approx. 2,900 ties
BATTERY:	JPL91450A 5.0 Ah Li-ion 14.4 V
CHARGER:	JC925A
BATTERY RECHARGE TIME:	80% capacity - 60min 100% capacity - 80min
APPLICABLE REBAR COMBINATION:	2 rebars: D16×D16 - D22×D25 4 rebars: D13×D13×D16×D16

## RB218 - SINGLE WIRE SMALL JAW MODEL -



### Applicable Rebar Combination



Mesh Rebar

MAXIMUM  
φ10×φ10

### SPECIFICATIONS

MODEL:	RB218
WEIGHT:	2.4 Kg Battery included
DIMENSIONS:	H305 × W105 × L270 mm
TYING SPEED:	Approx. 1.0 sec/tie
WRAPS PER TIE:	3 wraps
TIES PER COIL:	Approx. 150 - 210 ties
TIES PER CHARGE:	Approx. 4,600 ties
BATTERY:	JPL91450A 5.0 Ah Li-ion 14.4 V
CHARGER:	JC925A
BATTERY RECHARGE TIME:	80% capacity - 60min 100% capacity - 80min
APPLICABLE REBAR COMBINATION:	Mesh rebars: φ10×φ10

## TW898 SERIES SINGLE WIRE

# Tiewire for RE-BAR-TIER™



50 coils / box



**TW898**  
Regular Steel



**TW898-EG**  
Electro Galvanize



**TW898-PC**  
Polyester-Coated



**TW898-S**  
Stainless Steel

\*Not recommended for use with RB518

# PRODUCTS

## PJRC160 - CORDLESS REBAR CUTTER-



SPECIFICATIONS	
MODEL:	PJRC160
WEIGHT:	7.6 Kg Battery included
DIMENSIONS:	H228 × W100 × L389
CUT SPEED:	3.3 sec/cut
APPLICABLE REBAR:	UP TO 16MM REBAR
CUTS PER CHARGE:	310 Cuts
BATTERY:	JPL92550A 5.0 Ah Li-ion 25.2 V
CHARGER:	JC925A
BATTERY RECHARGE TIME:	80% capacity - 60min 100% capacity - 80min

## STANDARD EQUIPMENT FOR REBAR-TIER TVINTIER



**JC925A**  
Charger



**JPL91450A**  
14.4V 5.0Ah Li-ion Battery  
X 2 PACKS





**RB443T SPECIAL WEB SITE**



**RE·BAR·TIER**  
**TWINTIER**

**MAX**

**ENGINEERED FOR  
PERFORMANCE**

Dealer:

*The specifications and design of the products in this catalogue will be subject to change without advance notice due to our continuous efforts to improve the quality of our products.*

TT Ver.2\_092024\_PGN\_EN